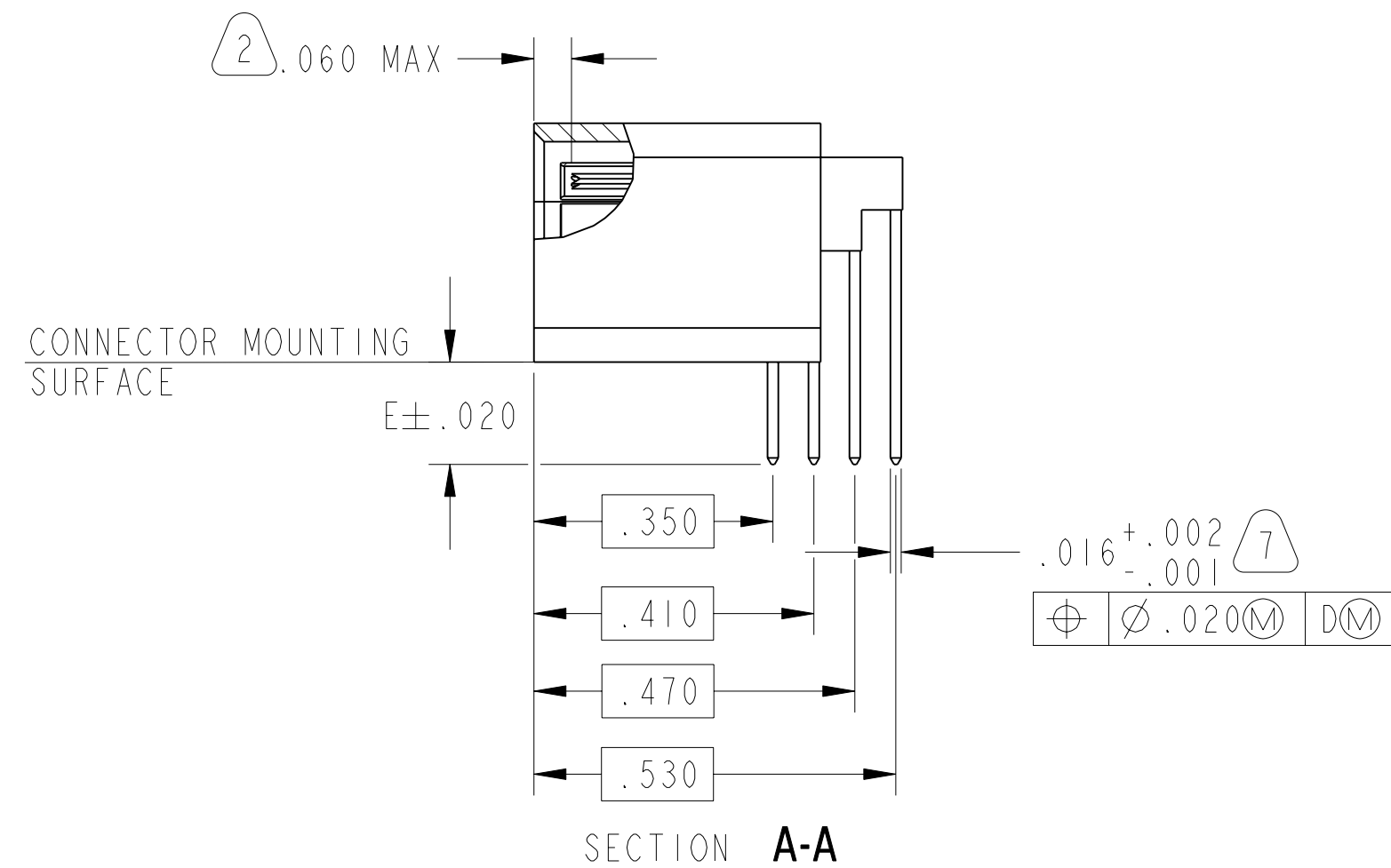
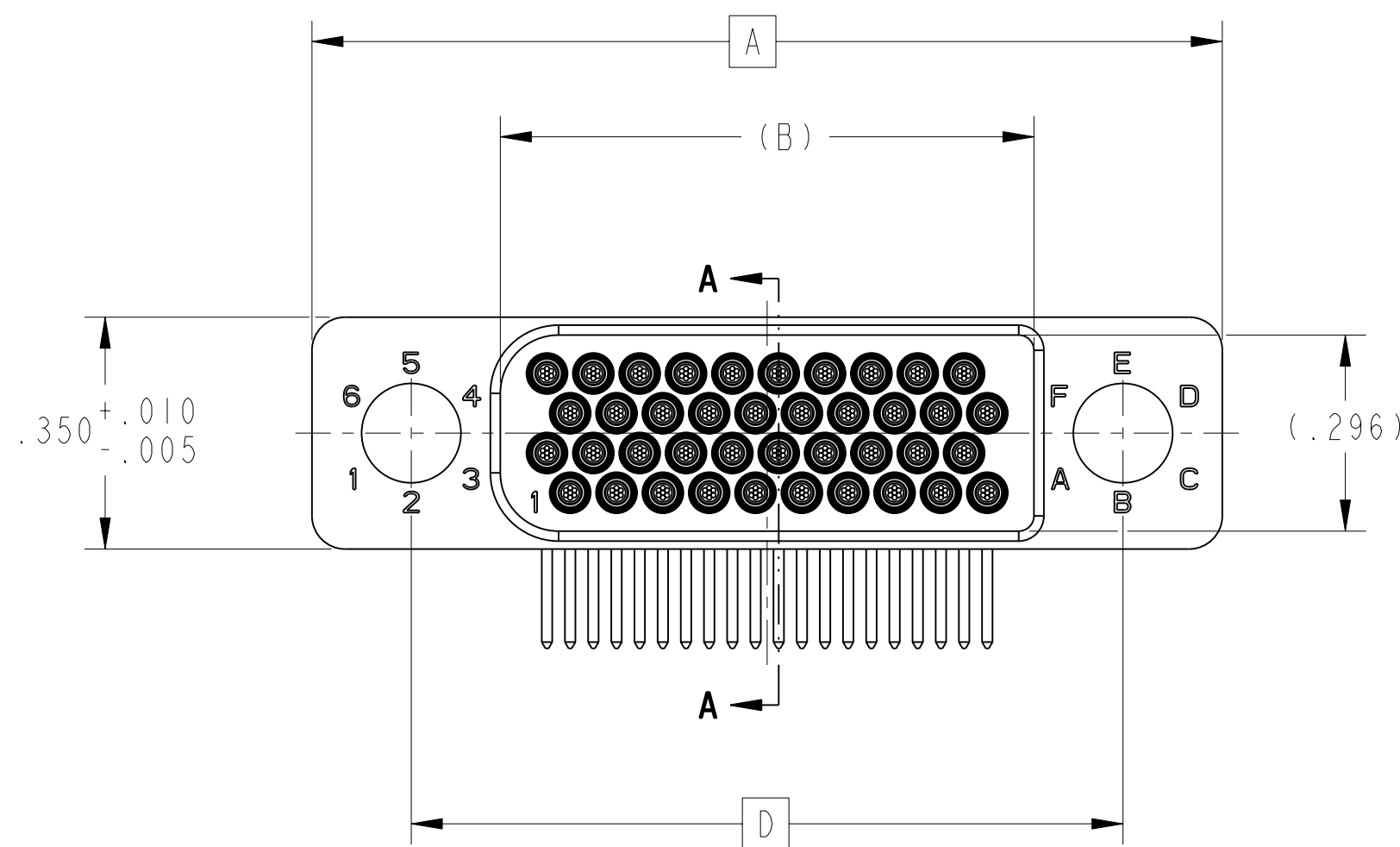
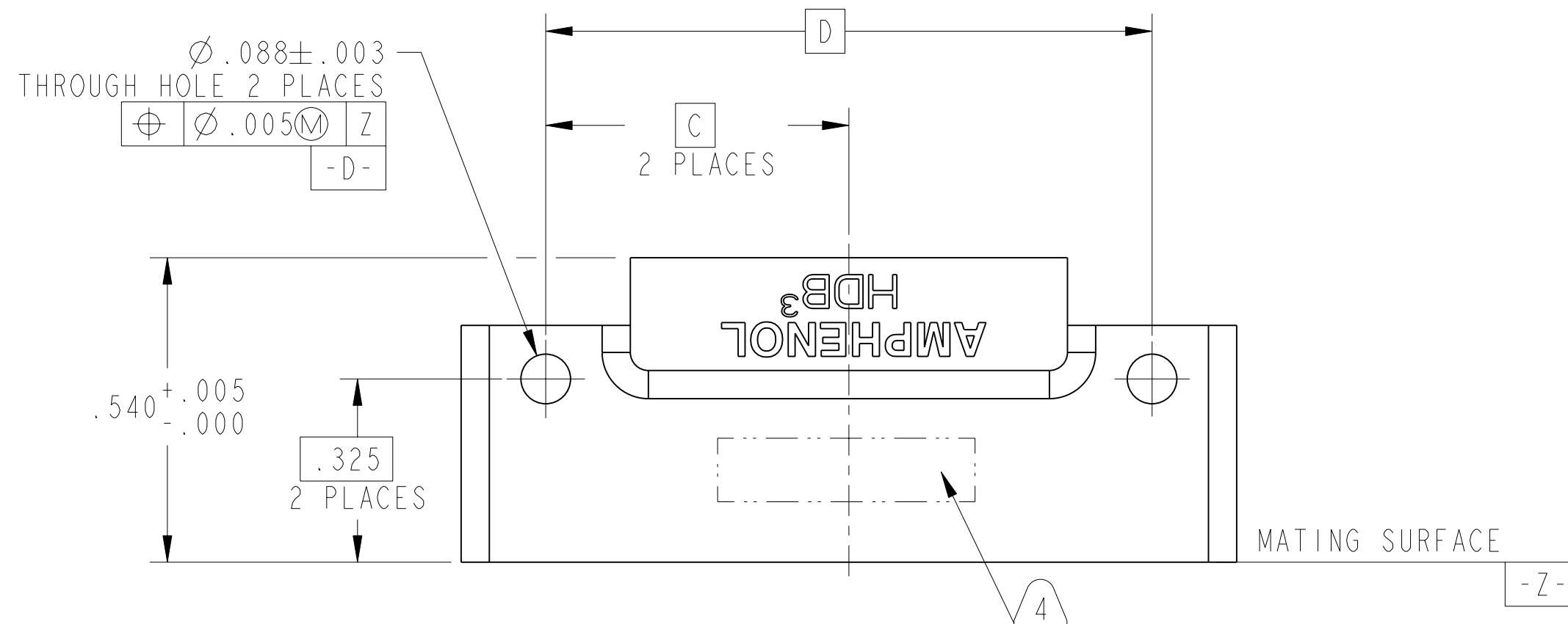


HDB-D4-XXXXXXX		DOCUMENT NO.
SHEET 1 OF 4		REV.
REVISIONS		
LTR	DESCRIPTION	DATE
A	INITIAL RELEASE	08/08/2007
B	CL (11) SEE CHANGE NOTICE ECNA3601-0000	DM 09/27/2007



NOTES:

THE USE OF THIS DOCUMENT IS UNLIMITED. HOWEVER, DOCUMENTS REFERENCED HEREON MAY CONTAIN LIMITED RIGHTS DATA.

N/A  
NEXT ASSEMBLY

PRO/ENGINEER INFORMATION  
 Pro/e Model Used:  
 HDB-D4-XXXXXXX.ASSEM  
 Drawing Name:  
 HDB-D4-XXXXXXX

UNLESS OTHERWISE SPECIFIED	SPECIFICATIONS	POS	QTY	PART NUMBER	DESCRIPTION	NOTE
LINEAR DIMENSIONS ARE IN INCHES TOLERANCES: .XXXX = $\pm .0005$ ANGLES = $\pm 2^\circ$ .XXX = $\pm .010$ .XX = $\pm .03$ .X = $\pm .1$ DIM. & TOL. PER ASME Y14.5M; DRM PER MIL-DTL-31000; OTHER Amphenol Stds. PER 9-3800 LEGENDS: = FLAG NOTE CALL OUT REFERENCE ONLY	MATERIAL SPEC.	PARTS LIST				
	N/A	<b>AMPHENOL CORPORATION</b> 40-60 DELAWARE AVENUE SIDNEY, N.Y. 13858 <b>4 ROW DAUGHTER BOARD CONNECTOR HDB3 SERIES</b>				
PROCESS SPEC.	9-3895 9-3856-5	APPROVALS		DATE	SIZE <b>C</b> CAGE CODE <b>77820</b> DOCUMENT NO. <b>HDB-D4-XXXXXXX</b> REV. <b>B</b> SCALE: 4.0 REF. N/A SHEET 1 OF 4	
		THIRD ANGLE PROJECTION		PREPARED BY: DMORSE ENGINEER IN CHARGE: BCHUBB DESIGN MANAGER: EHICKEY DESIGN ACTIVITY GROUP: BLP 17-Jul-07		

HDB-D4-XXX X XX X X

EXAMPLE: HDB-D4-040 M 02 2 X

CONTACT TERMINATION FINISH	
2	GOLD PLATED IN ACCORDANCE WITH MIL-G-45204, TYPE II, .000030 MIN THICK GOLD OVER .000050 MIN THICK NICKEL
5	TIN PLATED IN ACCORDANCE WITH ASTM B545, .00010 MIN THICK MATTE TIN OVER .00010 MIN THICK NICKEL. <span style="border: 1px solid black; border-radius: 50%; padding: 2px;">6</span>
6	TIN-LEAD PLATED IN ACCORDANCE WITH SAE-AMS-P-81728, .00010 MIN THICK TIN-LEAD OVER .00010 MIN THICK COPPER.

HARDWARE (SUPPLIED UNASSEMBLED)	
X	NO HARDWARE
P	POLARIZATION KEY (QTY 2)
L	LOW PROFILE MOUNTING NUT (QTY 2)

TERMINATION		
	TYPE	STICKOUT (DIM E)
00	PCB, RIGHT ANGLE, .016 DIA.	.060
01	PCB, RIGHT ANGLE, .016 DIA.	.090
02	PCB, RIGHT ANGLE, .016 DIA.	.120
03	PCB, RIGHT ANGLE, .016 DIA.	.150
04	PCB, RIGHT ANGLE, .016 DIA.	.180
05	PCB, RIGHT ANGLE, .016 DIA.	.210
06	PCB, RIGHT ANGLE, .016 DIA.	.300

BRUSH WIRE PLATING (CONTACT INTERFACE)	
M	0.000050 Au MIN THK OVER NICKEL
C	0.000020 Au MIN THK OVER NICKEL

CONNECTOR DIMENSIONS					
	NUMBER OF CONTACTS	DIMENSION A	DIMENSION B	DIMENSION C	DIMENSION D
040	40	1.375	.806	.5375	1.075
080	80	2.075	1.506	.8875	1.775
120	120	2.775	2.206	1.2375	2.475
160	160	3.475	2.906	1.5875	3.175

**NOTES:**

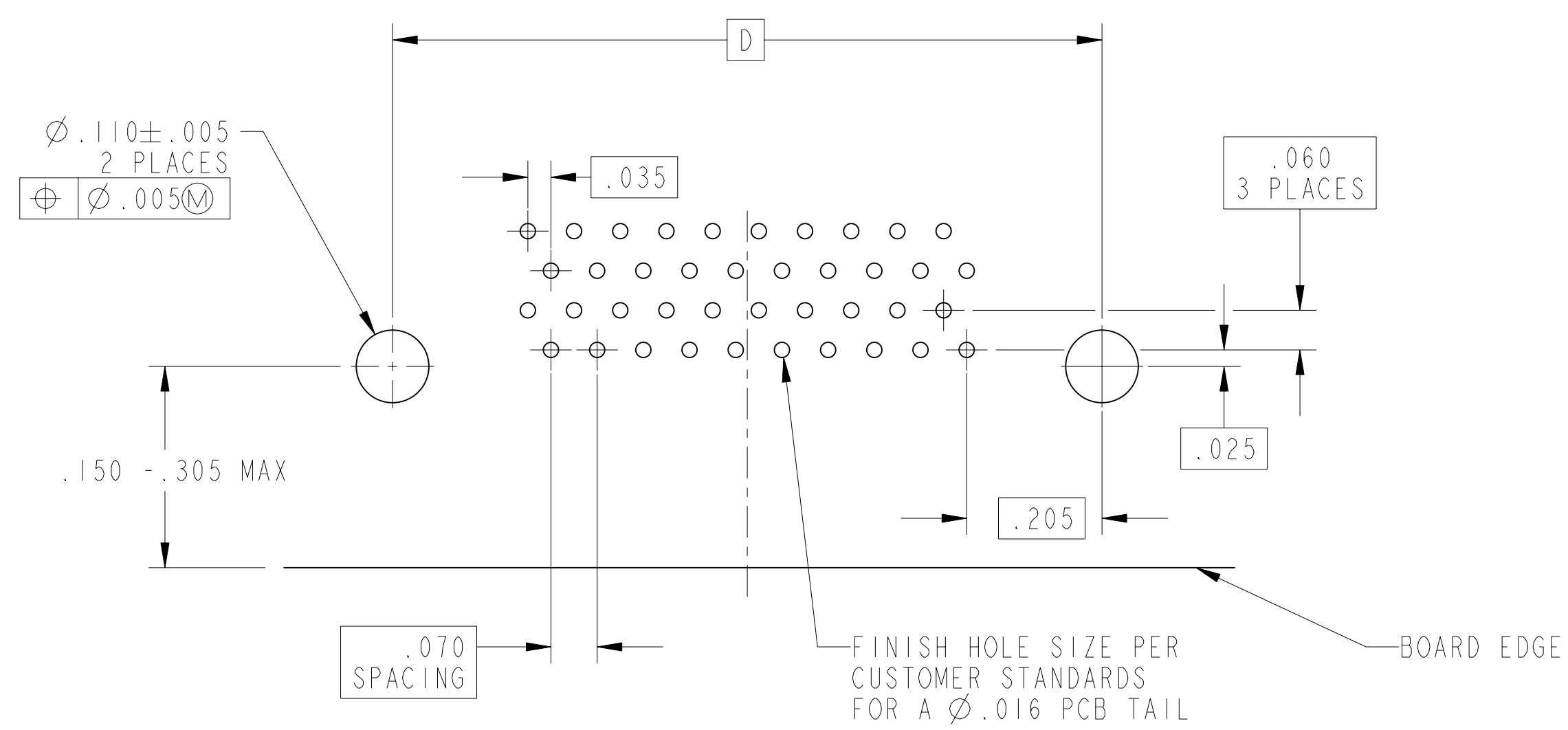
THE USE OF THIS DOCUMENT IS UNLIMITED. HOWEVER, DOCUMENTS REFERENCED HEREON MAY CONTAIN LIMITED RIGHTS DATA.

SIZE C	CAGE CODE 77820	DOCUMENT NO. HDB-D4-XXXXXXXXXX	REV. B
SCALE: 3.0		REF: N/A	SHEET 2 OF 4

HDB-D4-XXXXXXX

SHEET 3 OF 4

REV. B



**SUGGESTED DAUGHTER BOARD LAYOUT  
COMPONENT SIDE**

SCALE 5.000

**NOTES:**

THE USE OF THIS DOCUMENT IS UNLIMITED. HOWEVER, DOCUMENTS REFERENCED HEREON MAY CONTAIN LIMITED RIGHTS DATA.

FORMAT: C-U-E-1

REV. B  
SHEET 3 OF 4  
HDB-D4-XXXXXXX  
RELEASE STATE Released  
REGION B  
VERSION 1

HDB-D4-XXXXXXX

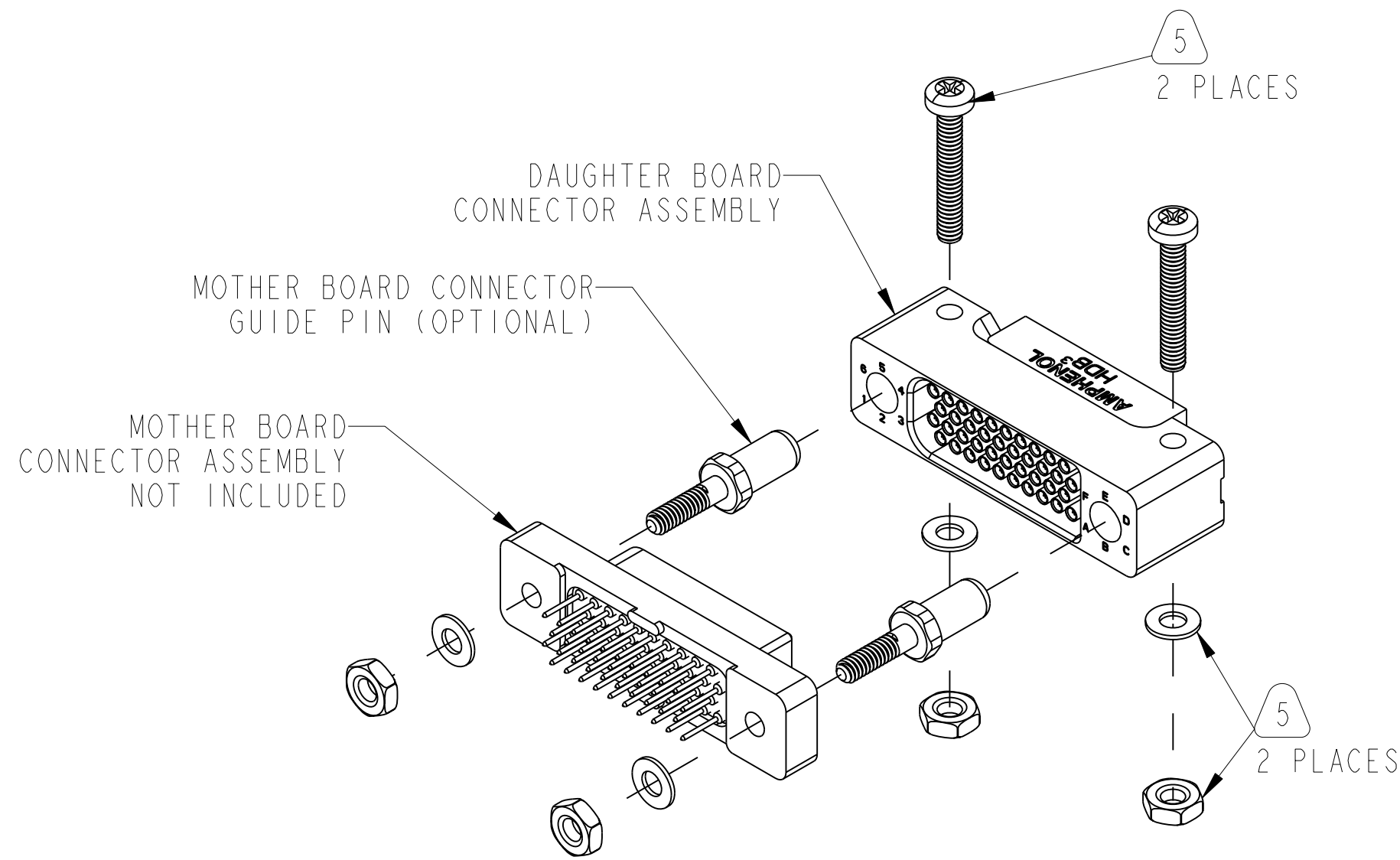
SHEET 4 OF 4

REV. B

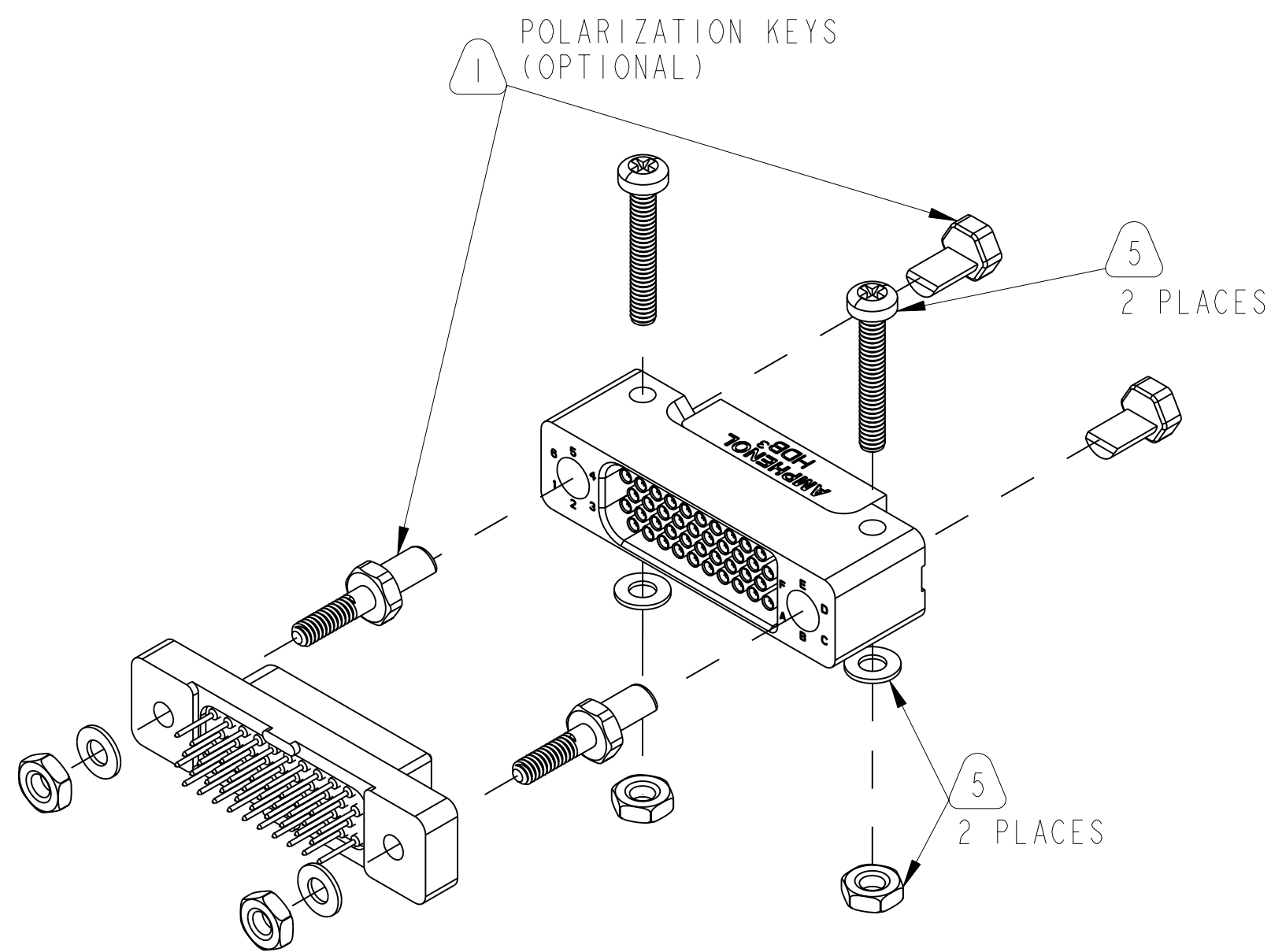
C

B

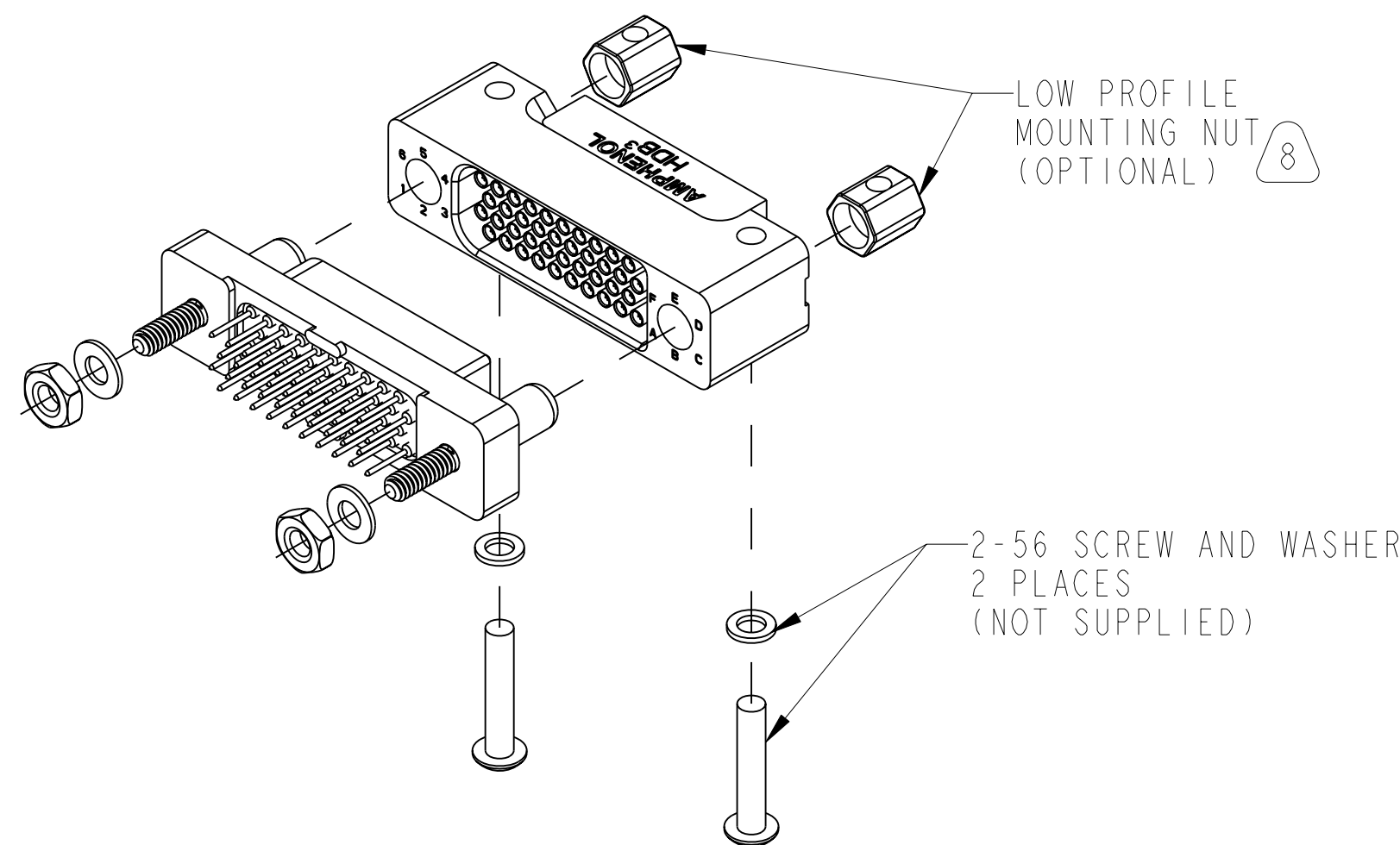
A



EXPLODED ISOMETRIC VIEW SHOWN WITH OPTIONAL GUIDE PIN



EXPLODED ISOMETRIC VIEW SHOWN WITH OPTIONAL KEYING



EXPLODED ISOMETRIC VIEW SHOWN WITH OPTIONAL LOW PROFILE MOUNTING NUT

8. LOW PROFILE MOUNTING NUTS ARE OPTIONAL. WHEN USING, A QUANTITY OF 2 ARE REQUIRED PER CONNECTOR. INSERT LOW PROFILE MOUNTING NUTS FROM REAR OF CONNECTOR PRIOR TO MOUNTING CONNECTOR WITH SCREWS (SCREWS NOT SUPPLIED). WHEN USING LOW PROFILE MOUNTING NUT, MATING CONNECTOR MAY ALSO USE GUIDE PINS.
7. CONTACT ASSEMBLIES ARE NON- REPLACEABLE.
6. RoHS COMPLIANT FOR TERMINATION FINISH TIN PLATE OVER NICKEL.
5. USE A 2-56 SCREW, NUT AND WASHER FOR MOUNTING CONNECTOR ASSEMBLY WITH OR WITHOUT POLARIZATION KEYS. (NOT SUPPLIED)
4. INK STAMP 77820, PART NUMBER AND DATE CODE ON INDICATED SURFACE PER 9-3856-5. DATE CODE PER 9-3895, CHARACTERS TO BE .062 ±.020 HIGH.
3. FOR MATING MOTHER BOARD CONNECTOR ASSEMBLY SEE DRAWING HDB-M4-XXXXXXX.
2. INDICATED DIMENSION IS TO POINT OF MINIMUM ELECTRICAL ENGAGEMENT.
1. POLARIZATION KEYS ARE OPTIONAL. WHEN USING, A QUANTITY OF 2 ARE REQUIRED PER CONNECTOR. INSERT KEYS FROM REAR OF CONNECTOR PRIOR TO MOUNTING CONNECTOR WITH SCREWS (SEE NOTE 5). WHEN USING KEY, MATING CONNECTOR MUST ALSO USE KEYS.

NOTES:

THE USE OF THIS DOCUMENT IS UNLIMITED. HOWEVER, DOCUMENTS REFERENCED HEREON MAY CONTAIN LIMITED RIGHTS DATA.

REPLACEMENT KEY/ LOW PROFILE MOUNTING NUT		
HW ID	TYPE	PART NUMBER
P	POLARIZATION KEY QTY 2	HDB-508804-000
L	LOW PROFILE MOUNTING NUT QTY 2	HDB-508804-001

SIZE <b>C</b>	CAGE CODE <b>77820</b>	DOCUMENT NO. <b>HDB-D4-XXXXXXX</b>	REV. <b>B</b>
SCALE: 3.0		REF: N/A	SHEET 4 OF 4

RELEASE STATE Released

SHEET 4 OF 4

HDB-D4-XXXXXXX