

# eZ-Balance

## Machine Balancing Software

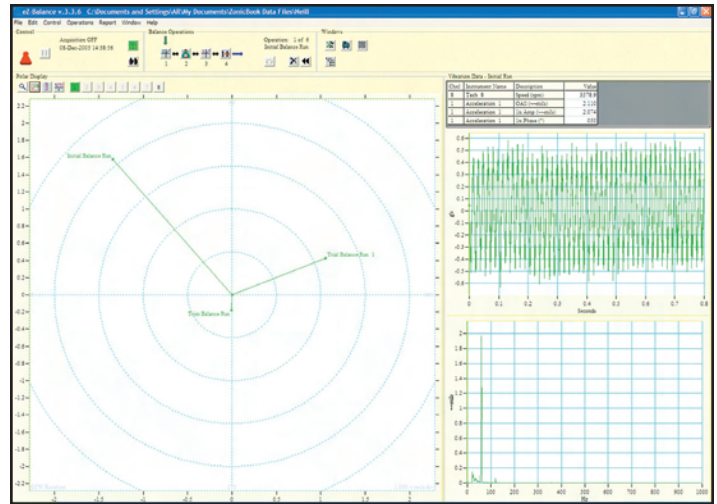


### Features

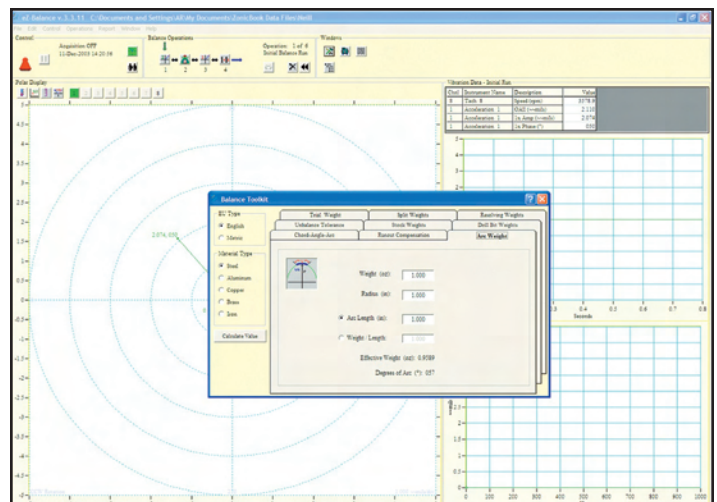
- Multiplane trial and trim balancing
- Polar, time, and spectral displays
- Computes and stores influence coefficients for future trim balancing
- Vibration data can be collected by the 600 Series or ZonicBook, or entered manually
- Balancing toolkit
  - Trial weight calculations
  - Weight splitting
  - Centrifugal force
  - Stock weights
  - Weight removed
  - Unbalance tolerance
- Balance solution can be based on multiple response points
- Supported Operating Systems: Windows 2000®, Windows Vista® x86 (32-bit), and Windows XP®

Balance rotating machinery with eZ-Balance and the 600 Series or ZonicBook/618E. The combination of the 600 Series or ZonicBook/618E with eZ-Balance provides a powerful system for multi-plane (up to 7 planes) balancing applications. eZ-Balance computes the optimal balance weights and their locations, based on vibration data collected from the 600 Series or ZonicBook/618E. The data is displayed in a convenient Polar plot that indicates the magnitude and phase of the unbalance as well as time and spectrum data.

eZ-Balance determines a balance solution by calculating the change in vibration condition based on adding trial weights. The balance process is a series of well defined steps. The initial trial run is used to measure the *as-found* vibration condition. The machine is shutdown and a trial weight is added. The balance run measures the effect of the trial weight and a trial solution is calculated. A trim run is then performed to confirm the results of the trial solution. Accelerometers, velocity probes, or displacement probes may be used to measure the vibration level at each balance plane. A tachometer measures the rotation speed and provides a phase reference.



*Polar, spectrum, and time displays showing progress of each balance run*



*Powerful toolkit for computing balance weights*

### Specifications

**Input Bandwidth:** DC to 20 kHz for 8-channel ZonicBook/618E;  
DC to 40 kHz for 4-channel 600 Series

**Spectral Lines:** 200 to 25,600

**FFT Windows:** None, Hanning, Flat Top, 3 Term Blackman Harris

**Integration:** Single and double integration, selectable low-frequency cutoff

**Averaging:** Linear

### Ordering Information

**Description**

Machine balancing software for the 600 Series and ZonicBook/618E

**Part No.**

eZ-Balance

### BUY NOW!

For complete product specifications, pricing, and accessory information, call 1-888-714-3272 (U.S. only) or visit [iotech.com](http://iotech.com).